

sauchaLIVING

Services & Pricing



Sacred simplicity for your space, your
body, and your being.



Hello There!

Thank you for considering Saucha Living.

If you've landed here, you're likely craving more ease in your home, your mind, or your day-to-day rhythm. At Saucha Living, we believe your space should support you, not drain you. Whether you're preparing for a move, settling into a new season of life, or simply ready to create more flow where you live and work, you don't have to do it alone. Together, we'll clear what no longer serves you and make space for what's truly supportive. This guide will help you understand how we can work together, what to expect, and the investment for each service. If what you see feels aligned, your next step is to schedule a Project Consultation so we can start planning your transformation.

Terrin Marino

Founder, Saucha Living



My Organizing Journey

Saucha Living was born from my own journey toward peace, clarity, and simplicity. My own seasons of challenge and renewal taught me that true harmony begins when we care for both our inner and outer worlds as one connected whole.

Before launching Saucha Living, I spent 15 years in the U.S. Navy as a Chief Petty Officer and Knowledge Manager. I understand firsthand the value of structure, organization, and compassion in leadership. With over two decades of combined experience in systems management, mentorship, and service, I approach every project with patience, presence, and a genuine desire to help others find balance.

Organizing, for me, is about more than creating order; it's about helping people breathe easier. It's about clearing the physical and emotional clutter so your home or workspace feels supportive, grounded, and aligned with who you are becoming.

Through Saucha Living, my mission is simple: to help families and small businesses create spaces that reflect peace, purpose, and possibility. Every project is personal to me, and I'm honored to walk beside you as you create room for what truly matters.



“The first step in organizing isn’t about your belongings, it’s about honoring where you are and creating space for where you’re going.”

Your Project

01 BOOK A CONSULTATION

Schedule a 30-minute consultation to clarify your goals and explore personalized solutions for your space. The \$150 consultation fee ensures dedicated, professional guidance and is applied toward your total if you move forward with a project.

02 SIGN THE PROPOSAL

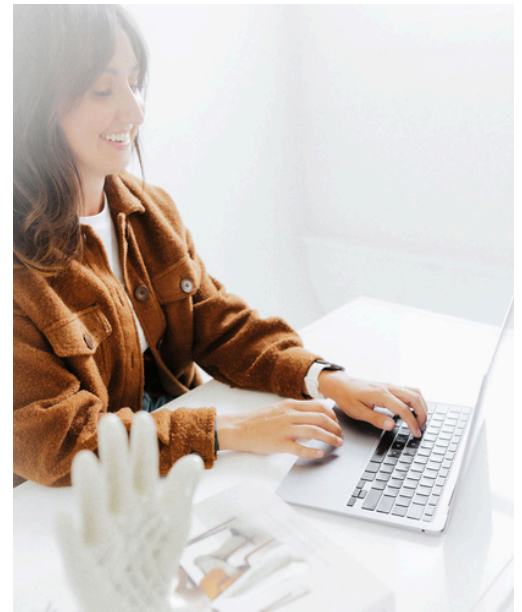
Review and sign your personalized proposal to confirm your project details and officially move forward.

03 PAY YOUR INVESTMENT

Submit a 50% deposit to reserve your selected date. Cancellations within 24 hours incur a \$100 fee. The remaining balance is due at project completion.

04 TRANSFORM YOUR LIFE

Relax and trust the process. From organizing and system setup to sourcing thoughtful products that enhance both form and function, every detail is handled with care. When we're finished, you'll walk into a space that feels lighter, grounded, and beautifully aligned.



COMMUNICATION

CONTACT DETAILS

(910) 420-9596
sauchaliving@gmail.com
Raeford, NC & Surrounding
Areas (Up to 50 miles)

OPERATING HOURS

M - F 9:00am - 6:00pm EST
Sat 9:00am - 4:00pm EST

WEBSITE

www.livesaucha.com

SOCIAL MEDIA

 @sauchaliving

 @sauchalivingnc

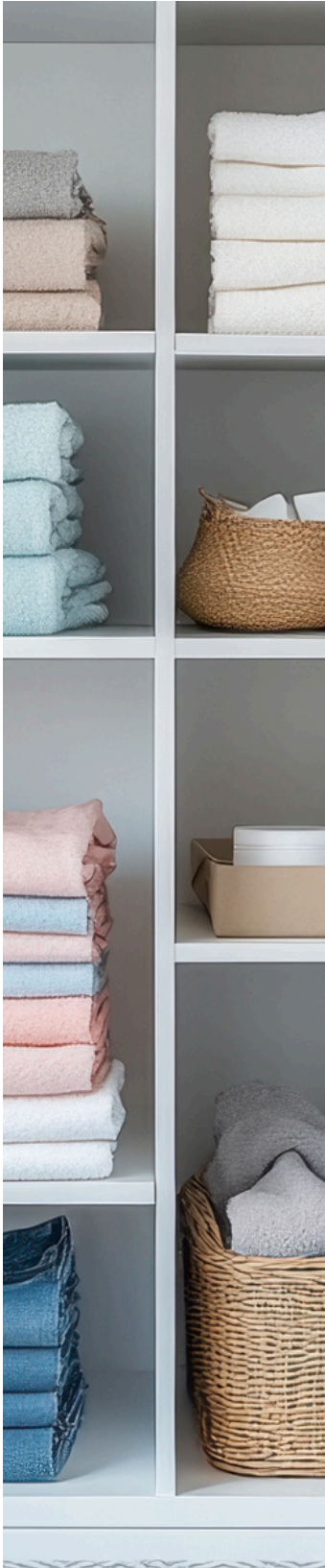
Our Approach

Your home holds stories, memories, and energy — all of which shape how you feel each day. Our process is designed to honor that. We don't just “tidy up.” We help you reconnect with your space in a way that feels grounding, intentional, and sustainable. Every drawer, corner, and surface has the potential to breathe again, and when it does, so do you. Our blend of organizing systems, design, and mindfulness allows you to live lighter and more fully, surrounded by what matters most.

What to Expect

- **You'll send photos or videos** before your consultation so I can plan effectively and arrive ready to support you.
- **You'll always know what's included.** I'll source products as needed based on your style, needs, and budget as discussed during the initial consultations. Containers, shelving, and décor items are added separately to the final invoice.
- **I travel to you.** Local sessions include up to 30 miles around Fayetteville, NC. For longer distances (up to 50 miles), a small travel fee applies.
- **We'll collaborate side by side** during the decluttering process to make confident, mindful decisions.
- **Sessions start at 4 hours** so you can see meaningful change after each visit.





Home Organizing

You deserve a home that feels peaceful, functional, and aligned with how you live, not cluttered by what you've outgrown. Together, we'll declutter, reimagine, and create systems that make your daily routines effortless.

WHAT YOU'LL GET:

- ✓ Hands on decluttering, sorting, and system creation
- ✓ Personalized product and layout recommendations
- ✓ Sustainable systems you can easily maintain
- ✓ Complimentary removal of trash and donation items, repurposed whenever possible (up to vehicle capacity per organizing day)
- ✓ You'll gain systems you can maintain and a refreshed space that supports your energy, not depletes it.

YOUR INVESTMENT

- Hourly rate: \$75 /hour (3-hour minimum)
- Transform Package: 6 hours, 2 organizers | \$840
- Multi-Room Transformation | Starting at \$750
- Whole-Home Reset | Starting at \$1,500

Downsizing & Unpacking



Transitions can feel overwhelming, but they don't have to. Whether you're moving into a new home, simplifying your current one, or supporting a loved one through change, I'll help make the process smooth, supportive, and stress-free. Together, we'll create a space that feels grounded, functional, and beautifully aligned with your next chapter.

YOUR INVESTMENT

- Day Rate: Starting at \$1,000 (8 hours + team support)
- Full-Service Package: Starting at \$3,000 for a 1-2 bed home
- Custom quotes available for support for ADHD, neurodivergent clients, and hoarding recovery

WHAT YOU'LL GET:

- ✓ Gentle support through sorting and downsizing decisions
- ✓ Hands-on unpacking and thoughtful placement of furniture and decor
- ✓ Functional system setup to make your new space easy to maintain
- ✓ Specialized support for ADHD, neurodivergent clients, and hoarding recovery
- ✓ Complimentary removal of trash and donation items, repurposed whenever possible (up to vehicle capacity per organizing day)



Senior Move Management

If you or a loved one is transitioning into a new chapter, I'll ensure it happens with compassion, dignity, and thoughtful organization. Every step, from sorting keepsakes to setting up their new spaces, is handled with care.

WHAT YOU'LL GET:

- ✓ Gentle downsizing and sorting of personal belongings
- ✓ Coordination and oversight of moving day logistics
- ✓ Organized unpacking and thoughtful room setup
- ✓ Emotional and practical support through every step

YOUR INVESTMENT

- Project Rate: Starting at \$3,000 (typical move to studio or one-bedroom within 50 miles)

Perfect for families who want the process to feel supported, not stressful.

Specialty Services

Seasonal Styling & Storage Maintenance

As seasons shift, so do your needs. Swap wardrobes, rotate décor, maintain storage systems, and keep your home feeling aligned year-round.

- Per Visit: Starting at \$300 (3 hours)
- Quarterly Membership: 4 visits per year | \$1,000

Interior Decorating

You deserve a space that looks as good as it feels. Together, we'll design a space that reflects your personality and style, blending aesthetics with function. We'll focus on maintaining simplicity that keeps life flowing smoothly, and give you a space you look forward to coming home to.

- Consultation: \$275
- Includes mood boards, layout recommendations, and item sourcing guidance.

Construction Consultation

If you're remodeling or building, I'll help you make intentional design choices that keep your new space functional, organized, and beautiful from the start.

- On-Site Consultation: \$150
- Includes walkthrough, design recommendations, and follow-up notes.





Home Management Support

Life gets busy. From light organizing, laundry assistance, and errands, this service is perfect for clients seeking regular support in maintaining consistent order and calm.

- Hourly Rate: \$65 /hour (2-hour minimum)
- Weekly, Bi-Weekly, and Monthly Maintenance Plans Available

Refresh Membership

A recurring maintenance program designed to keep your systems fresh and functional. Ideal for clients who've already completed a full project and want continued support.

- 4 weekly visits per month (up to 2 hours): \$480 /month or \$240 every two weeks. (\$120 Savings)
- Includes upkeep of previously organized spaces, minor updates, and light restyling.



Business Storefront & Inventory Organizing

Your business runs better when your space has structure and systems that support you. We'll streamline your inventory, design an inviting environment curated and staged to promote sales, and make your processes more efficient. You'll spend less time searching and more time serving your customers.

- Hourly Rate: \$100–\$140 /hour (2-hour minimum)
- Custom quotes available for larger projects.

Virtual Organizing & Declutter Coaching

Remote guidance via video sessions, tailored action plans, and accountability check-ins to help you make progress from anywhere.

- Hourly Rate: \$65 /hour
- 3-Session Bundle: \$180 (\$15 Savings)

Add-On Services



Product Shopping

Research, sourcing, and/or purchasing bins, baskets, furniture, or décor on your behalf.

\$50 /hour +
cost of
materials

Consignment Coordination

Sorting, packing, and drop-off of consignment items for resale. 30-40% of total resale profits, depending on the level of coordination required.

\$50 flat
per trip

Custom Labeling

Hand-applied or printed labeling for drawers, bins, and containers.

Starting
at \$30

“

*Terrin was warm, kind, and genuinely cared/
listened to my concerns. I never once felt judged
about the clutter or the chaos in my space. She
actually welcomed it and was even excited about
it which was so refreshing and really put me at
ease! While I was letting go of some sentimental
things, I got unexpectedly emotional, and Terrin
was so reassuring, and comforting. She truly
felt like a friend in that moment.*

– EBONY



FAQ's

Do you work with ADHD, neurodivergent, or hoarding clients?

Yes, it's one of my specialties. My approach is gentle, nonjudgmental, and centered on how you naturally think and live. I create step-by-step systems that reduce overwhelm, honor your pace, and make it easier to maintain order long after our sessions end.

Should I buy bins or products before we start?

I recommend that you **don't buy anything ahead of time**. More containers can sometimes create more clutter. I believe in a less-is-more approach and only suggest products when I know they'll truly enhance your space's function and flow.

What happens to the items I let go of?

I believe in sustainability and giving back. Whenever possible, I donate items to local ministries and non-profits in need rather than large thrift corporations. I also repurpose and rehome pieces to ensure they find new life and bring joy to someone else.

How long do projects usually take?

Each project varies based on your space and your desired outcome. Most projects unfold over one to two full-day sessions (6 hours each). It all depends on what you'd like to address. Our goal is to find a rhythm that feels manageable, fits your priorities, and offers visible progress each step of the way.

What if I just need help for a few hours?

If scheduling a project consult doesn't feel quite right for you, you're always welcome to book hourly sessions at \$75/hour for hands-on organizing support. Whatever project has been weighing on you, we'll show up and focus on what matters most and help you make meaningful progress. Simply **call** or **email** to check availability and get on my hourly schedule.

Why Choose Saucha Living

Your home should hold you, not overwhelm you. Through mindful organization and intentional design, I help you rediscover the beauty in your space and the peace that comes from simplicity. Saucha Living is where structure and soul meet. We help you cultivate a balanced and functional environment, so you can focus on what matters most.

BOOK CONSULT

If this guide has spoken to something in you, trust that feeling. Your space is ready to support the version of you who's ready for ease, clarity, and calm. I'd love to help you get there.

Terrin Marino



(910) 420-9596
www.livesaucha.com
sauchaliving@gmail.com

